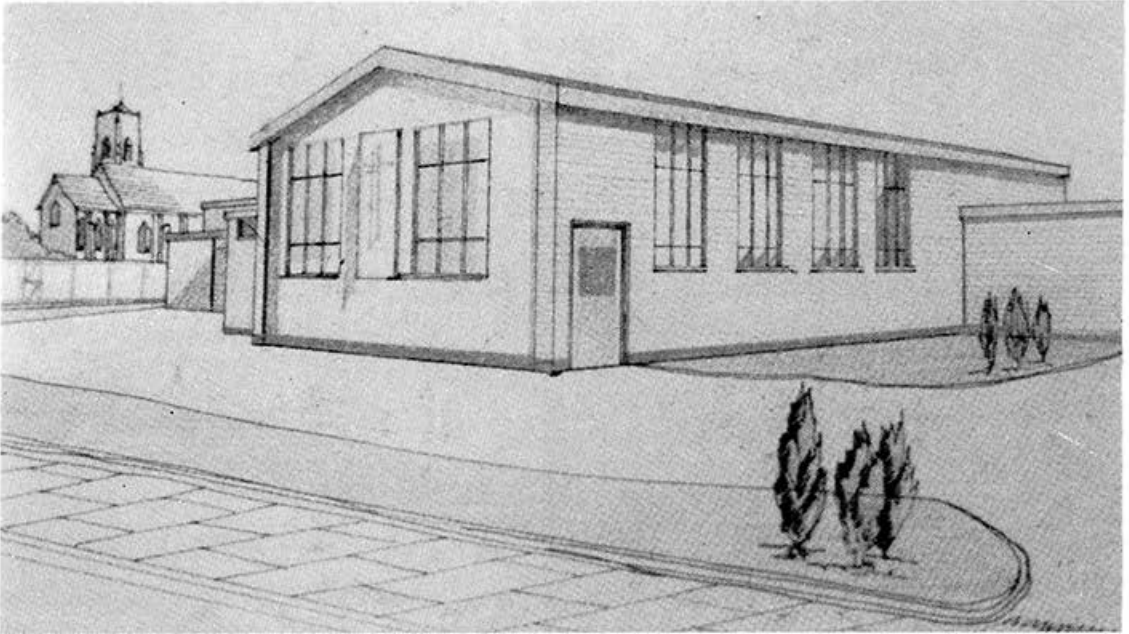


**CHAPTER 19.**  
**THE CHURCH HALL**



**Proposed Church Hall from  
Parish Magazine October 1963.**

In 1966, with the building of the Church Hall in Hill Street, the move from Hobnock Road became complete. The Church had moved to Wolverhampton Road in 1933, the vicarage had followed in 1954 (until then, the Vicar had lived in Lowerfield house, now known as The Old Vicarage, in Brownshore Lane) and now, in 1966, all three - Church, Church Hall, and Vicarage - were on the same site.

It was not without some nostalgia that the old St. John's Hall was waved goodbye, for it had been the scene of many happy gatherings. By 1966, however, it had become outdated and expensive to maintain and as soon as the new Hall became ready for occupation the old place was sold, demolished and five houses built on the site.

First as Church, then as Hall, it had served the village for over 100 years.

In 1966 the new Hall was opened by Mr. Charles Tudor and Mr. Percy Griffiths, and the dedication performed by the Bishop of Lichfield. It had a number of fine features; the main hall was light and spacious with a good stage, there was a large and well fitted kitchen, and next to it a coffee bar, not big but quite cosy and large enough for committee meetings.

The whole building was electrically heated and certainly no one missed the old 'furney' coke boilers of the old

hall. It also had well appointed cloak-rooms and toilets and the large car park was well able to cater for the new age of mobility.

At the back of the hall was an area of ground, which, eventually, with the co-operation of the Parish Council, was fenced and surfaced to make a very good tennis court. For some reason this never really got going and unfortunately eventually fell into disuse and disrepair.

Such was the success of the new building that it soon became apparent that it was not big enough and in 1972 three further rooms were added. These were of different sizes and could be adapted for a variety of purposes - surgery waiting room, doctor's consulting room, Sunday School classes, whist drives, printing, committee room, etc. etc. - and were named the Aidan Room (after St. Aidan's, Newtown) the Tudor room (after Charles Tudor, long-serving warden), and the Chad room (St. Chad, Lichfield).

All this worked very well but the original 1966 building began to develop faults. The floors, of plastic tiles on concrete, were subject to heavy condensation when large numbers of people were in occupation, rendering the floor slippery and dangerous. The only solution was to put down a wooden floor, an exercise which was prohibitively expensive.

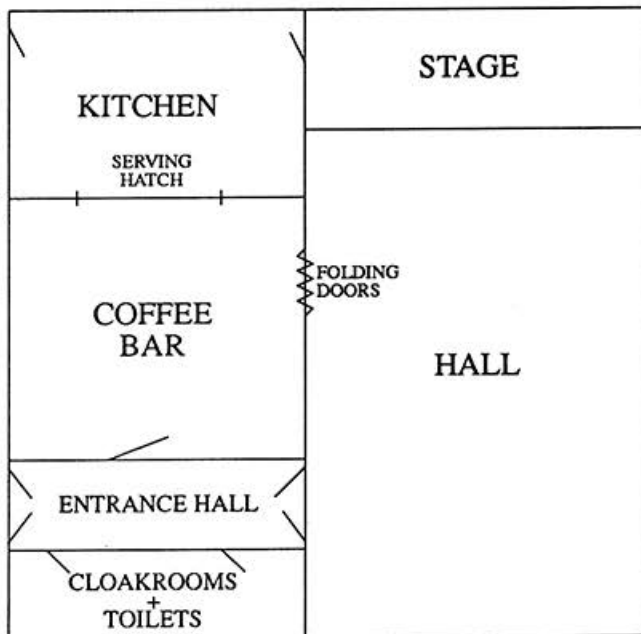
The roof, too, was leaking and some of the woodwork showed signs of rot. In short a large sum of money was needed to put matters right.

In the meantime, since 1966, other halls had become available in the village - the Brownshore First School, The Broad Lane Pavilion, the High Hill Community Centre - and the P.C.C. at that time decided that we no longer needed a large hall anyway. Consequently the large hall was demolished and this land, together with the tennis court at the rear, was sold for housing.

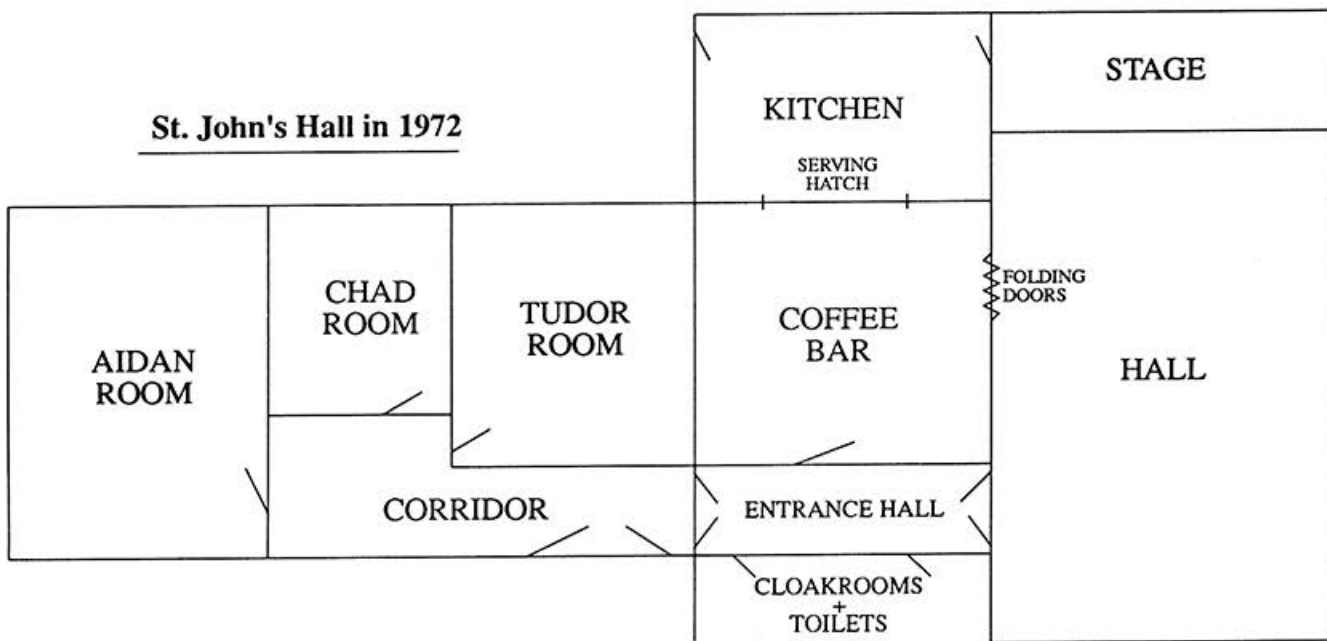
The old large kitchen and coffee bar were adapted to make a largish meeting room, and a small refreshment bar was built in the entrance hall.

Times change, and Church people must change with them. Whether the present arrangement will remain acceptable for the future, only time will tell.

St. John's Hall in 1966



St. John's Hall in 1972



St. John's Hall in 1988

